

Words from Names

Read and Say

Basic

1. *atlas*
2. *mercury*
3. *narcissus*
4. *psyche*
5. *odyssey*
6. *museum*
7. *hypnosis*
8. *Fahrenheit*
9. *czar*
10. *pasteurize*
11. *fate*
12. *jovial*
13. *tantalize*
14. *hygiene*
15. *mentor*
16. *psychiatrist*
17. *mosaic*
18. *Celsius*
19. *fury*
20. *galvanized*

READ the sentences. **SAY** each bold word.

Which world **atlas** has the most recent maps?

Thermometers are filled with **mercury**.

The **narcissus** blooms early in the spring.

Your **psyche** and body work together.

Her **odyssey** took her around the world.

When will the **museum** exhibit his art?

Her doctor uses **hypnosis** to treat pain.

This thermometer uses the **Fahrenheit** scale.

The **czar** ruled over a vast empire.

Dairies **pasteurize** milk to kill germs.

The **fate** of a candidate rests with the voters.

I am always cheered up by **jovial** people.

Their music will **tantalize** you to dance.

Brushing your teeth daily is good **hygiene**.

My **mentor** taught me how to study.

A **psychiatrist** treats emotional problems.

Thousands of tiny tiles formed the **mosaic**.

What is the temperature in degrees **Celsius**?

His rudeness filled me with **fury**.

Rust will not harm **galvanized** steel.



Spelling Strategy Knowing the origin of words that come from names can help you spell and understand the meanings of the words.

Think and Write Write the Basic Words.

- | | |
|----------------|---------------|
| Review | 23. Braille |
| 21. boycott | 24. leotard |
| 22. silhouette | 25. saxophone |

- | | |
|------------------|----------------|
| Challenge | 28. thespian |
| 26. iridescent | 29. epicure |
| 27. nemesis | 30. gargantuan |

In

Vocal

Use yo

1. a

2. tl

a

3. tl

4. r:

5. a

te

6. a

7. a

8. a

9. a

st

10. a

hi

11. a

12. cc

13. a

Vocab

questio

14. W

15. W

16. W

17. W

18. Hc

19. W

20. If

te

Challe

Use yo

21. Ar

22. Be

hc

23. Iris

24. Th

25. Th

Independent Practice

Vocabulary: Definitions Write the Basic Word that matches each definition. Use your Spelling Dictionary.

1. a doctor who specializes in mental illness
2. the temperature scale on which water freezes at 32 degrees and boils at 212 degrees
3. the mind or soul
4. rage or violent anger
5. a silvery-white liquid metal used in measuring temperature
6. a former emperor of Russia
7. a guide or teacher
8. a final result or outcome; destiny
9. a picture made with small pieces of glass or stone
10. a building in which artistic, scientific, or historical works are exhibited
11. a plant with a white or yellow trumpet-shaped flower
12. coated with zinc as protection against rust
13. a sleeplike condition



Vocabulary: Question Clues Write the Basic Word that answers each question. Use your Spelling Dictionary.

14. What would you be on if you took a trip around the world?
15. What does the smell of food do to you when you are hungry?
16. What might you learn about in health class?
17. What can be done to purify milk?
18. How do you feel when you are very happy?
19. What could you look in to find a map of your state?
20. If you were heating water, and it began to boil at 100 degrees, what temperature scale would you be using?

Challenge Words Write the Challenge Word that completes each sentence. Use your Spelling Dictionary.

21. An _____ eats only food fit for the gods.
22. Because of its _____ size, the Greeks believed that Mount Olympus was the home of the gods.
23. Iris, goddess of the rainbow, wore an _____ robe of many colors.
24. The Greek hero waged war against his long-time _____.
25. The _____ was famous for his role as Zeus, ruler of the gods.

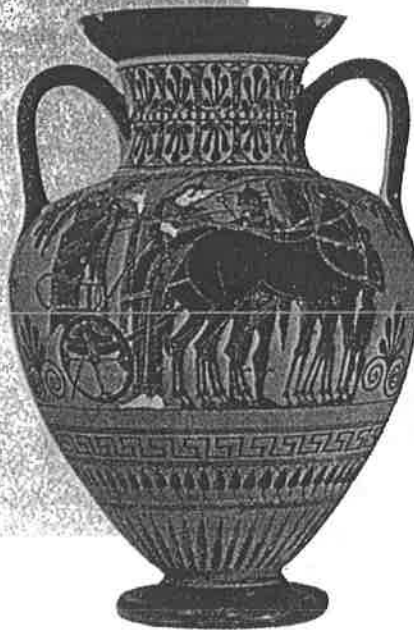
Proofreading and Writing

Proofread for Spelling Find five misspelled Basic or Review Words in this announcement. Write each word correctly.



This month, the City Gallery has an exhibit devoted to Greek mythology. A silhouette hangs above the entrance showing Ares, the god of war, in all his fury.

In the far corner of the gallery, a huge mosaic of a scene on Mount Olympus is sure to tantalize even a casual observer. Collections of myths are on sale in the muzeum shop. Most are also available in Braille.

**Basic**

1. atlas
2. mercury
3. narcissus
4. psyche
5. odyssey
6. museum
7. hypnosis
8. Fahrenheit
9. czar
10. pasteurize
11. fate
12. jovial
13. tantalize
14. hygiene
15. mentor
16. psychiatrist
17. mosaic
18. Celsius
19. fury
20. galvanized

Review

21. boycott
22. silhouette
23. Braille
24. leotard
25. saxophone

Challenge

26. iridescent
27. nemesis
28. thespian
29. epicure
30. gargantuan

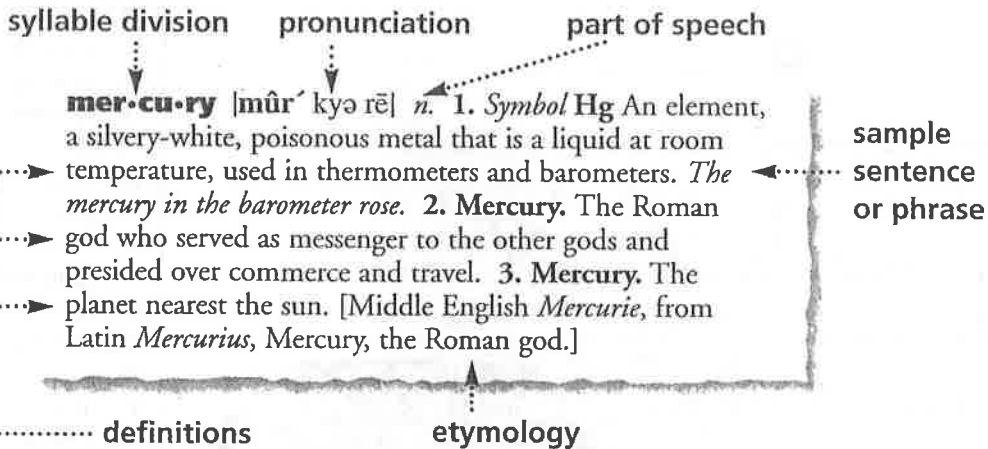
Write a Cause and Effect Paragraph Where does lightning come from? How is a rainbow formed? Ancient myths held the gods responsible for such things. Today, we rely on scientific explanations. Write a cause and effect paragraph explaining a natural event. If you do not know the real cause or effect of the event, make one up. Try to use five spelling words.

Proofreading Marks

- ¶ Indent
- ^ Add
- ^ Add a comma
- “ ” Add quotation marks
- ⊙ Add a period
- ⌋ Delete
- ≡ Capital letter
- / Small letter
- ↶ Reverse order

Dictionary

Parts of a Dictionary Entry You can learn a lot about a word from its dictionary entry. Look at the sample below.



Practice Use the sample entry to answer each question below.

1. What part of speech is *mercury*?
2. What Latin word does *mercury* come from?
3. How many definitions are given for *mercury*?
4. Which definition of *mercury* is used in this sentence? *When the temperature falls, so does the mercury.*

Review: Spelling Spree

Code Breaker The Basic and Review words below are written in code. Use the following code key to figure out each word. Write the decoded words correctly. Capitalize when necessary.

CODE:	z	y	x	w	v	u	t	s	r	q	p	o	n	m	l	k	j	i	h	g	f	e	d	c	b	a
LETTER:	a	b	c	d	e	f	g	h	i	j	k	l	m	n	o	p	q	r	s	t	u	v	w	x	y	z

Example: nfhvfn *museum*

- | | | |
|---------------|---------------|-----------------|
| 5. zgozh | 12. ylbxlgg | 19. kbxrszgirhg |
| 6. uzsvmsvrg | 13. qlerzo | 20. xvohrfh |
| 7. tzoezmravv | 14. ufib | 21. sbtrvmv |
| 8. kzhgvfirav | 15. hzckslmv | 22. kbxsv |
| 9. nvmgli | 16. xazi | 23. ovlgziv |
| 10. sbkmlhrh | 17. uzgv | 24. lwbhvh |
| 11. nvixfib | 18. mzixrhhfh | |

Proof

Proofread
Words in th

This mont
exhibit de
silhouette f
Ares, the
In the far
a huge mo
Mount O
tantilize
Collectio
sale in th
are also a

Write
lightnin
myths h
rely on
paragra
real cau
spelling

Vocabulary Enrichment

Unit 4
BONUS

Expanding Vocabulary

Spelling Word Link

psychiatrist

Slang If you heard a friend say "My mother is a shrink," your friend would be using a **slang** word to mean that his or her mother is a psychiatrist. Slang is our most informal type of speech. Slang words are often peculiar to specific groups within a culture.

Write a standard word or phrase that means the same thing as the underlined slang expression in each sentence below. Use your Spelling Dictionary.



1. I prefer to hang out with forest nymphs and hunting dogs.



2. Can you please give me directions to the main drag?



3. My sister Muses can be real pills.

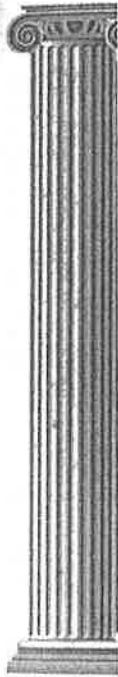


4. If those giants razz me, I'll just strike them with a thunderbolt.

Now write a sentence for each slang word from above.

5. _____ ?
_____ ?
_____ ?
6. _____ ?
_____ ?
_____ ?
7. _____ ?
_____ ?
_____ ?
8. _____ ?
_____ ?
_____ ?

Language
mythology
words to c



TRY 1

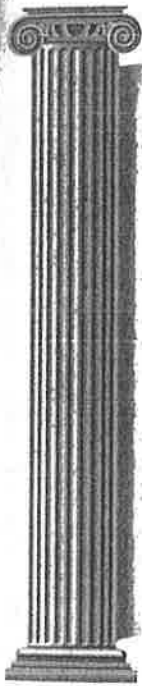
Possible
be done c
9. built
10. seen
11. riding
12. walking

Fact Fi

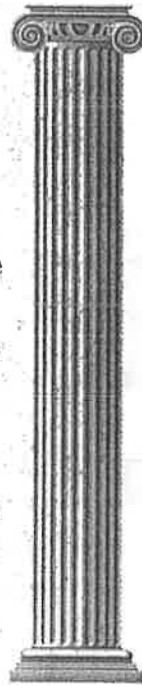
The most
mythology
the top
in many
man and

Real-World Connection

Language Arts: Mythology All the words in the box relate to mythology. Look up these words in your Spelling Dictionary. Then write the words to complete this paragraph.



The ancient Greeks created gods and goddesses to explain natural events, or (1), that they did not understand. According to the stories, art, and (2) poems of Greek mythology, these (3) beings surrounded themselves with pleasure. They ate (4) and drank (5). Vulcan, the (6) maker, provided them with transportation. Knowledge was also important to the gods. A special goddess, called a (7), presided over each type of science and art. Despite their luxurious existence, the gods were easily angered. Those who displeased them were often imprisoned. One prison, called a (8), was a maze from which only magic could provide escape.



Spelling Word Link

atlas

epic
immortal
phenomena
Muse
nectar
ambrosia
chariot
labyrinth

TRY THIS!

Possible or Impossible? Write *possible* if the activity described could be done or *impossible* if it could not.

9. building a Muse
10. seeing a chariot
11. riding an epic
12. walking in a labyrinth

Fact File

The most powerful of all the gods in Greek mythology was Zeus. He ruled the universe from the top of Mount Olympus. Zeus is represented in many works of art, sometimes as a bearded man and sometimes in the form of an animal.

