

Read and Say



fur fir

Basic

1. *fir*
2. *fur*
3. *scent*
4. *sent*
5. *scene*
6. *seen*
7. *vain*
8. *vein*
9. *principal*
10. *principle*
11. *manor*
12. *manner*
13. *who's*
14. *whose*
15. *tacks*
16. *tax*
17. *hangar*
18. *hanger*
19. *died*
20. *dyed*

READ the sentences. **SAY** each bold word.

They planted a **fir** tree.

My dog has brown **fur**.

That flower has a nice **scent**.

My aunt **sent** me a package.

Were you near the **scene** of the accident?

I have **seen** this movie before.

She is selfish and **vain**.

The nurse took blood from a **vein** in my arm.

She is **principal** violinist in the orchestra.

What is one **principle** that you live by?

The **manor** has a huge front lawn.

His speaking **manner** is always polite.

Please see **who's** at the door.

Do you know **whose** coat this is?

Use **tacks** to put up the poster.

How much **tax** did you pay on that?

The airplane is in the **hangar**.

Put your coat on a **hanger**.

My dog almost **died** when he was born.

She **dyed** her shirt green.

Think and Write

Each word is a homophone. **Homophones** are words that sound alike but have different spellings and meanings.

|vān|

vain

unsuccessful, fruitless

|vān|

vein

a blood vessel

- How do the spellings differ in each homophone pair? What is the meaning of each homophone?

Now write the homophone pairs that make up the Basic Words.

Review

- | | |
|-----------|----------|
| 21. berry | 23. soar |
| 22. bury | 24. sore |

Challenge

- | | |
|------------|-------------|
| 25. barren | 27. burrow |
| 26. baron | 28. burro |
| | 29. borough |

Independent Practice



Spelling Strategy

Homophones are words that sound alike but have different spellings and meanings. When you use a homophone, be sure to spell the word that has the meaning you want.

Context Sentences Write the Basic Word that completes each sentence.

1. The pilot parked the airplane in the _____.
2. Put your jacket on a _____ in the closet.
3. Jenny _____ three letters to me.
4. This fragrant perfume has a sweet _____.
5. "Be honest" is an important rule, or _____, to live by.
6. The head of a school is called a _____.

Vocabulary: Word Clues Write the Basic Word that fits each clue.

- | | |
|----------------------------------|---------------------------------|
| 7. an animal's coat | 11. a type of evergreen tree |
| 8. contraction for <i>who is</i> | 12. a wealthy landowner's house |
| 9. opposite of <i>invisible</i> | 13. opposite of <i>humble</i> |
| 10. a way of doing things | |

Challenge Words Write the Challenge Word that matches each definition. Use your Spelling Dictionary.

- | | |
|---------------------------|---|
| 14. a small donkey | 17. without vegetation |
| 15. a nobleman | 18. a hole in the ground made by a small animal |
| 16. a self-governing town | |



Spelling-Meaning Connection

Scene comes from the Greek word *skene*, meaning "stage." The [k] sound is no longer pronounced. Because *scenic* and *scenery* are related in meaning to *scene*, they are also related in spelling.

19-20. Write *scene* and *scenic*. Then underline the letters that are the same in both words.



Dictionary

Homophones A dictionary entry tells you whether a word has a homophone. The entry word and its homophone are listed at the end of the entry.

fir [fîr] *n.* Any of several cone-bearing evergreen trees with rather flat needles. *These sound alike fir, fur.*

Practice Use your Spelling Dictionary to complete the exercises.

1. Look up *foul* and write its homophone.
2. Which word means "offensive to the taste or smell"?
3. Which word means "a bird that is raised for food"?
4. Look up *idle* and write its homophone.
5. Which word means "avoiding work; lazy"?
6. Which word means "a person or thing that is adored or greatly admired"?



Review: Spelling Spree

Homophone Hints Write a Basic or Review Word to fit each clue.

- | | |
|---|---------------------------------------|
| 7. mailed a letter | 16. conceited |
| 8. painful | 17. changed the color of |
| 9. a small fruit | 18. another name for perfume |
| 10. to rise or fly high | 19. a home for airplanes |
| 11. a blood vessel | 20. what dogs sometimes do with bones |
| 12. past tense of <i>die</i> | |
| 13. money people must pay to support the government | |
| 14. small nails | |
| 15. a hook for clothing | |

How Are You Doing?

Write each spelling word in a sentence. Practice any misspelled words with a family member.

Proofreading and Writing

Proofread for Spelling Find ten misspelled Basic or Review Words in this essay. Write each word correctly.

Winter Walks

A winter day in the forest is a beautiful seen. The fur trees are covered with snow, and a strong scent of pine fills the air. On my walks I have scene small animals and birds who sometimes have called to me in a scolding manor. Two blue jays wonder whose disturbing them before they soar away. A chipmunk with striped fir asks who's footsteps it hears as it guards its manner. They should not worry. My principle rule in the forest is "Leave nothing there and take nothing away." This principal helps keep the forest beautiful.

Basic

1. fir
2. fur
3. scent
4. sent
5. scene
6. seen
7. vain
8. vein
9. principal
10. principle
11. manor
12. manner
13. who's
14. whose
15. tacks
16. tax
17. hangar
18. hanger
19. died
20. dyed

Review

21. berry
22. bury
23. soar
24. sore

Challenge

25. barren
26. baron
27. burrow
28. burro
29. borough

Write Homophone Riddles

If you mailed perfume to your mom, what would you have done? Sent scent! Write five riddles using spelling-word pairs. Then exchange papers with a partner and solve the riddles.

one riddle to share 5pts

Proofreading Tip

If you use a computer spell-checker, **remember that it cannot tell whether you have used the correct homophone.**

Proofreading Marks

- ¶ Indent
- ^ Add
- ⊙ Add a period
- ⌘ Delete
- ≡ Capital letter
- / Small letter
- ~ Reverse order

**Unit 8
BONUS**

Vocabulary Enrichment

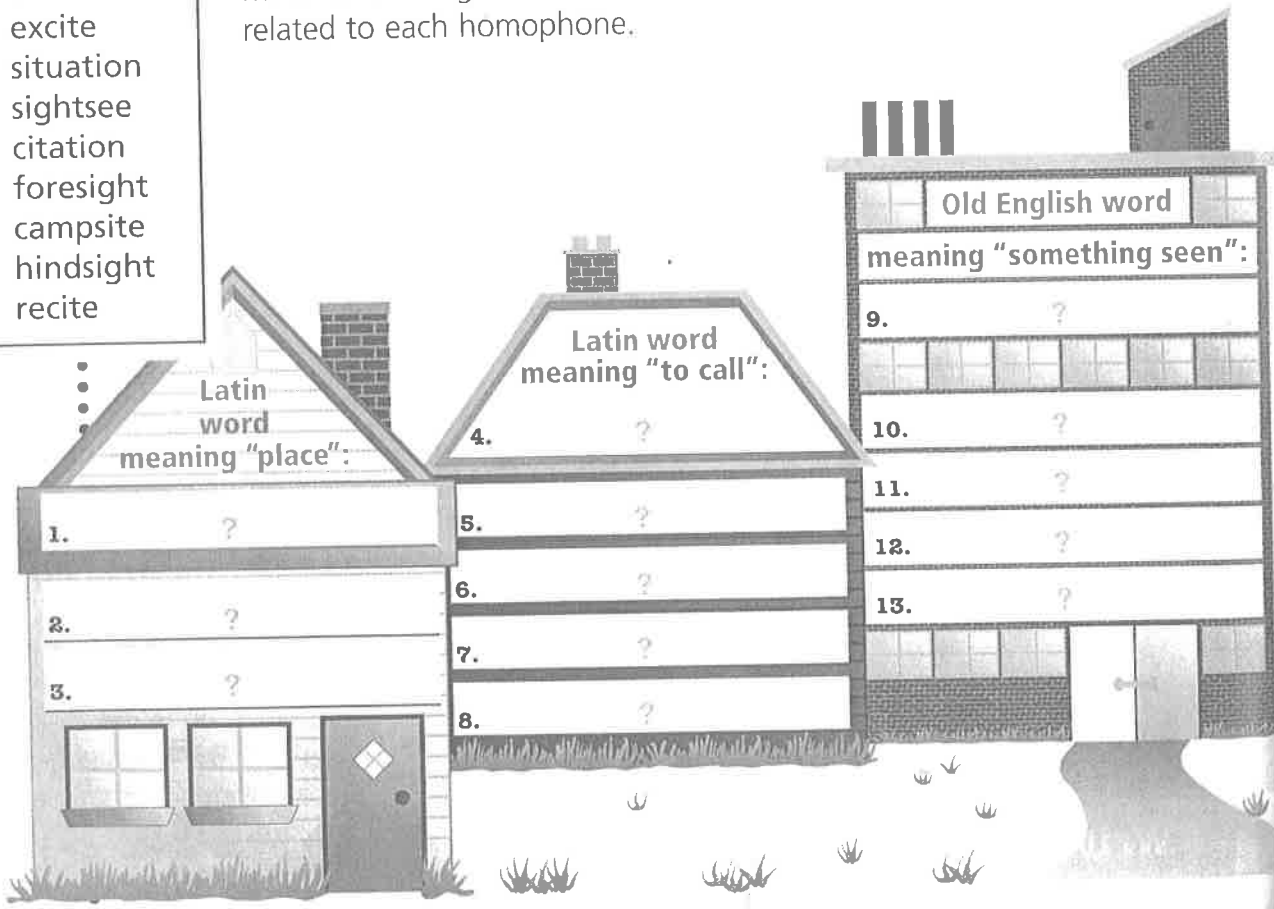
Expanding Vocabulary

Spelling Word Link
homophone

insight
incite
excite
situation
sightsee
citation
foresight
campsite
hindsight
recite

Homophone Word Families Homophones have different spellings and meanings because they come from different sources. Each homophone also has its own family of words that are related in spelling and meaning.

Look up *site* in your Spelling Dictionary. Read the History box for *cite*, *sight*, and *site*. For each house below, write the homophone that matches the origin. Then write the words from the box that are related to each homophone.



Show You Know! Write a word from one of the word families above to complete each sentence.

14. Anya will _____ her poem on parents' night.
15. Thousands of tourists _____ in San Antonio each summer.
16. Kiran had the _____ to bring an umbrella.
17. We found a good _____ and pitched our tent.
18. The firefighter received a _____ for bravery.

Real-World Connection

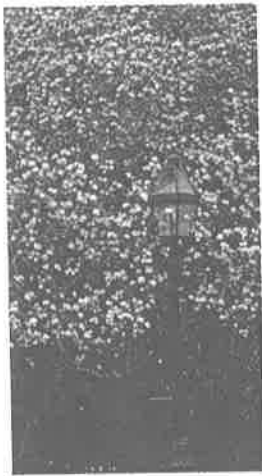
Science: Trees All the words in the box relate to trees. Look up these words in your Spelling Dictionary. Then write the words to complete this encyclopedia entry.

Spelling Word Link

fir

cedar
banyan
mahogany
sycamore
sassafras
magnolia
ginkgo
juniper

Trees



Magnolia Tree

Uses of Trees Trees have many uses. The pleasant-smelling wood of the (1), an evergreen, is used to make chests. Beautiful furniture is made from (2), a strong, reddish-brown wood. The blue berries of the (3) flavor medicines, and tea is made from the root bark of the (4). The lovely pink and white flowers of the (5) add beauty to gardens, as does the (6), first found in China. The (7), with its many trunks, and the (8), with its ball-like seeds, offer cool, leafy shade.

Try This Challenge

Clue Match Write a word from the box to match each clue.

9. It frequently grows along streams.
10. Its bark, roots, and leaves have a spicy taste.
11. It has fan-shaped leaves.
12. One of these trees sometimes looks like a forest.

Fact File

The redwood, an evergreen that grows along the Pacific Coast from California to southern Oregon, is among the world's tallest kinds of trees. It can reach a height of more than two hundred feet.